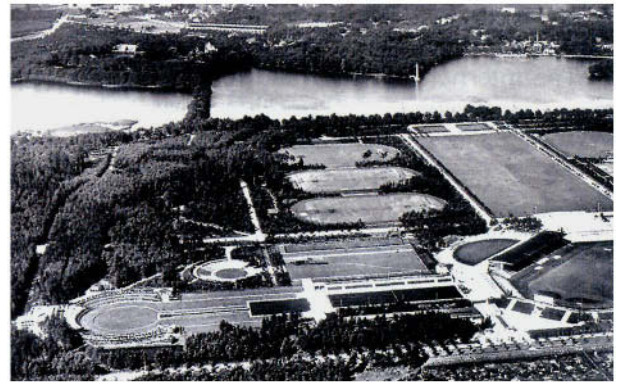


Alfred Hensel GER  
\*8 March 1880 †1969



The Stadium in 2006



The Stadium in 1928

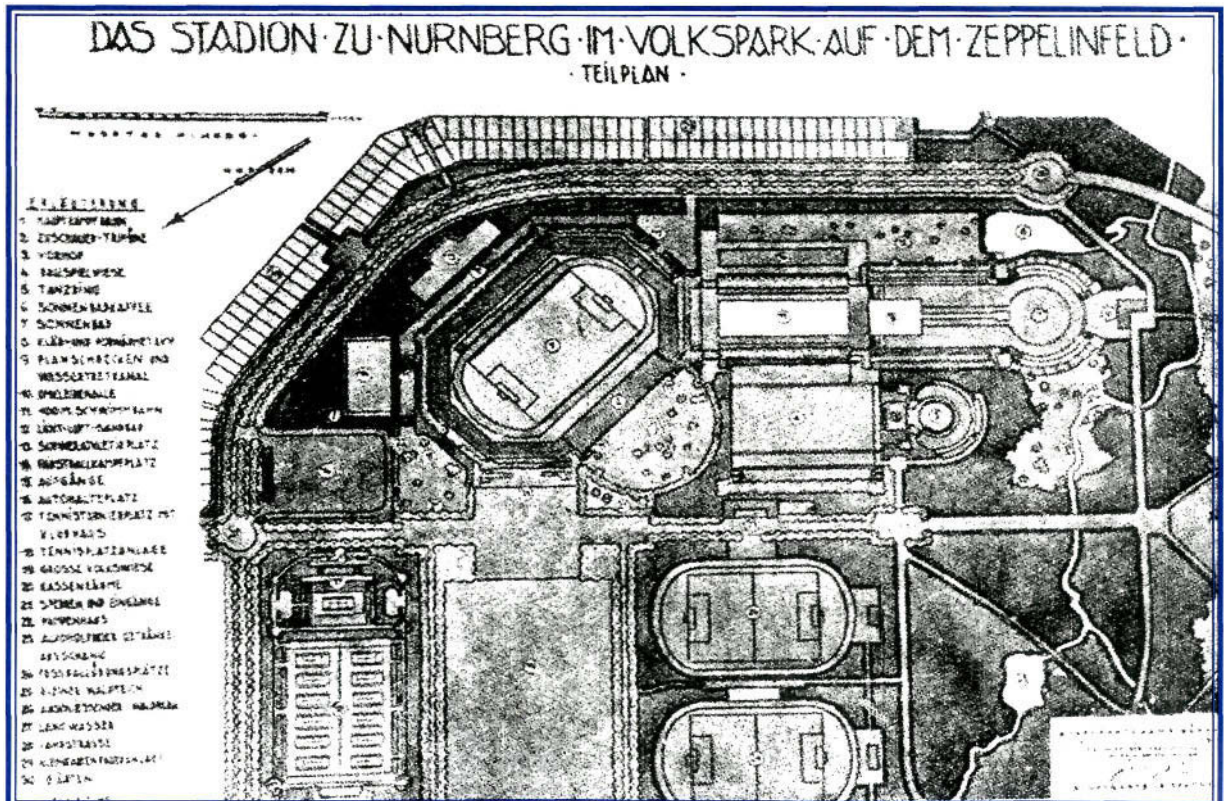
Alfred HENSEL was the town-planning director of the city of Nuremberg. His design of the Nuremberg stadium in the people's park on the Zeppelin field won the favour of the jury because he had succeeded in making light of the difficulties of an angular infinitive to the advantage of the installation as a whole. The excerpt shown here brings together a number of sport and recreation areas in a relatively dense space. Today the centre of the project brings together a strange mixture of facilities with playing fields, areas for wrestling and boxing, tennis courts, a swimming pool, areas for dancing and sunbathing, a cafe and even a cinema.

None-the-less it has found entry into the town-planning of Nuremberg and was realised. Together

with the architect Otto Ernst SCHWEITZER HENSEL planned the people's park around the Nuremberg stadium which was constructed from 1926 till 1928 near the Dutzendteich. In this time Alfred HENSEL was the landscaping director of the building authority of Nuremberg.

In 1929 the City of Nuremberg published a brochure detailing the concept of this facility and noting the additional benefit that its construction would create jobs.

During Nazi rule HENSEL became member in the Nazi Party on February 1st 1940 and was amongst others responsible of the construction of the premises for the Nuremberg Rally. (WZ/TZ)



Adolf Hensel's design of the stadium and the Surroundings